

AXIS M30-VE Network Cameras

Outdoor-ready, day/night fixed mini domes with HDTV performance.



- > Compact, vandal-resistant, outdoor-ready design
- > HDTV video and day/night functionality
- > Built-in IR illumination
- > Easy to install with Power over Ethernet and edge storage
- > Input/output ports for external devices

AXIS M3024-LVE and AXIS M3025-VE Network Cameras, which are part of the AXIS M30 Series, are affordably priced, vandal-resistant HDTV fixed mini domes for excellent video during day and night-time conditions in indoor or outdoor environments. They are ideal for installation inside or outside the entrance of a hotel, boutique, restaurant, office or school.

AXIS M3024-LVE provides 1 MP and HDTV 720p video and offers built-in IR illumination for surveillance even in complete darkness. AXIS M3025-VE provides 2 MP in full HDTV 1080p video.

The fixed domes can be mounted on walls, ceilings or pendants. They have a 3-axis camera angle adjustment for flexible installation. The cameras also support Axis' Corridor Format for vertically oriented video streams that maximize coverage of areas such as along walls or aisles. The cameras come focused at delivery.

AXIS M3024-LVE and AXIS M3025-VE have input/output ports for connection to external devices. The cameras also support AXIS Camera Application Platform for intelligent video applications.

The cameras offer a convenient video management solution with their built-in memory card slot for edge storage and support for software such as the complimentary AXIS Camera Companion.

The cameras come with a 2 m (6.6 ft.) network cable and are powered using Power over Ethernet (IEEE 802.3af).



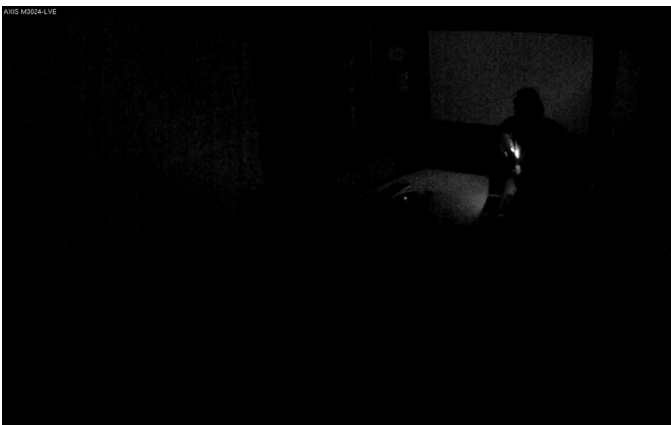
Day/night functionality and IR illumination

The day/night functionality in AXIS M30-VE cameras is useful for surveillance in indoor or outdoor environments with changing lighting conditions. The day/night functionality involves an automatically removable infrared-cut filter in the cameras. The filter is on during daytime or bright conditions, enabling the cameras to produce colors as the human eye sees them. In nighttime or low-light conditions, the filter is removed to enable the cameras to take advantage of invisible near-infrared light

from available light sources to produce good quality black and white images. The functionality allows the cameras to extend their usefulness in low-light conditions and enables IR (infrared) illuminators to be used to further improve video quality in dark environments. AXIS M3024-LVE has built-in IR illuminators and is ideal for surveillance in complete darkness. AXIS M3024-LVE uses high-efficiency, long-life 850 nm IR LEDs.

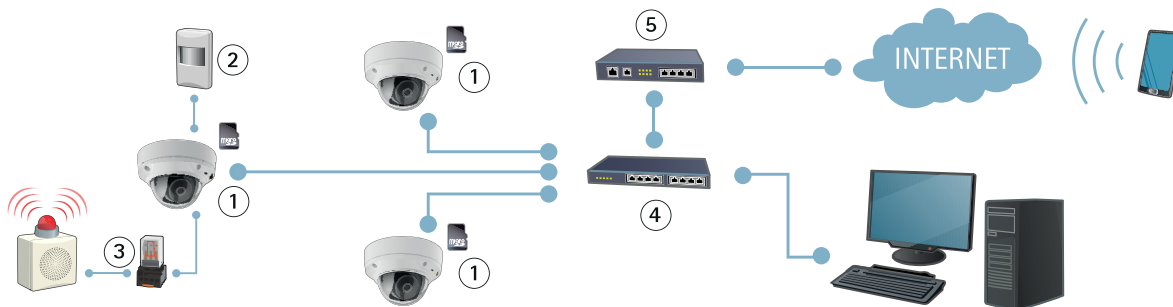


The above images from AXIS M3025-VE illustrate the camera's day/night functionality: at left, day mode; at right, night mode.



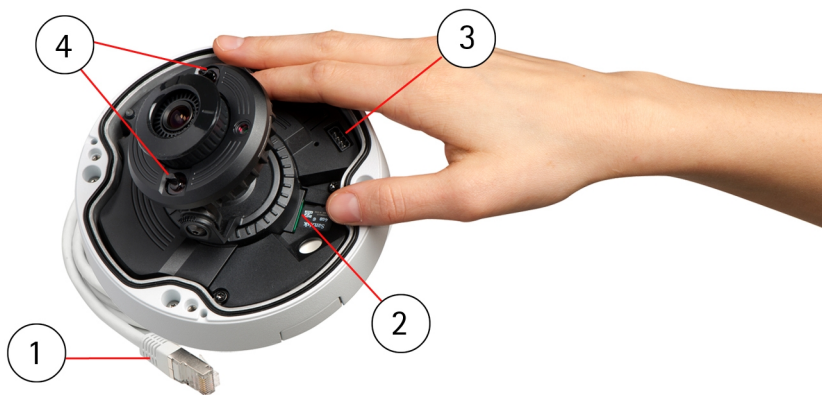
The above images from AXIS M3024-LVE—depicting the same scenario of a man with a small flashlight in a dark room—show the difference that IR illumination makes for surveillance in the dark. The image at left is without the use of IR illuminators. The image at right uses IR light from the camera's built-in IR LEDs. IR light is invisible to the human eye but visible to the camera.

Schematic for a small surveillance system



The illustration above shows a system that uses AXIS M30-VE cameras together with AXIS Camera Companion (1) for video management; input and output ports to external equipment such as a PIR detector (2) and alarm (3) for enhanced alarm management; PoE switch (4) for local networking and Power over Ethernet; and router (5) for Internet access.

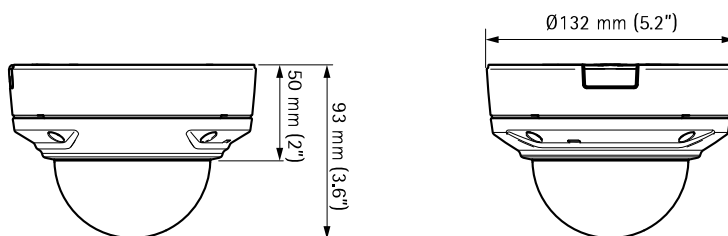
Under the cover



Camera parts: 1) attached 2 m (6.6 ft.) network cable; 2) memory card slot; 3) one input and one output port; 4) built-in IR illuminators (AXIS M3024-LVE only)

Dimensions

AXIS M3024-LVE
AXIS M3025-VE



Optional accessories

For indoor use:

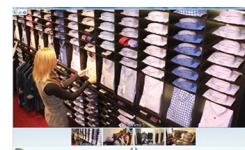
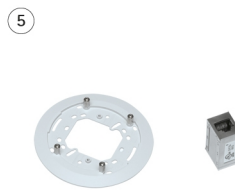
1. AXIS T94F01D Pendant Kit with Network Cable Coupler Indoor
2. AXIS T94F01L Recessed Mount Kit with Network Cable Coupler Indoor

For outdoor use:

3. Network Cable Coupler IP66 (can fit inside AXIS T94F02D Pendant Kit)
4. AXIS T94F02D Pendant Kit with sunshield

For indoor or outdoor use:

5. AXIS T94F01M J-Box/Gang Box Plate and Network Cable Coupler Indoor (coupler must be placed in waterproof area)
6. AXIS Camera Companion (included), AXIS Camera Station and video management software from Axis' Application Development Partners (not included). See www.axis.com/products/video/software/



Technical Specifications – AXIS M30-VE Network Cameras

Models	AXIS M3024-LVE: 1 MP / HDTV 720p, IR illumination AXIS M3025-VE: 2 MP / HDTV 1080p
Camera	
Image sensor	AXIS M3024-LVE: 1/4" progressive scan RGB CMOS AXIS M3025-VE: 1/2.7" progressive scan RGB CMOS
Lens	M12 mount, fixed iris, megapixel resolution, IR corrected AXIS M3024-LVE: 2.8 mm, 77° view ^a , F2.0 AXIS M3025-VE: 3.6 mm, 91° view ^a , F2.0
Day and night	Automatically removable infrared-cut filter
Minimum illumination	AXIS M3024-LVE: Color: 0.8–100000 lux, F2.0 B/W: 0.16 lux, F2.0, 0 lux with IR illumination on AXIS M3025-VE: Color: 0.8–100000 lux, F2.0 B/W: 0.16 lux, F2.0
Shutter time	1/8000 s to 1/6 s
Camera angle adjustment	AXIS M3024-LVE: Pan ±175°, tilt 65°, rotation ±175° AXIS M3025-VE: Pan ±175°, tilt 70°, rotation ±175°
Video	
Video compression	H.264 Main Profile (MPEG-4 Part 10/AVC) Motion JPEG
Resolutions	AXIS M3024-LVE: 1280x800 (1 MP) to 320x240 AXIS M3025-VE: 1920x1080 (HDTV 1080p) to 320x240
Frame rate	25/30 fps with power line frequency 50/60 Hz
Video streaming	Multiple, individually configurable streams in H.264 and Motion JPEG Controllable frame rate and bandwidth VBR/CBR H.264
Pan/Tilt/Zoom	Digital PTZ
Image settings	Compression, Color, Brightness, Sharpness, Contrast, White balance, Exposure control, Backlight compensation, Wide dynamic range – dynamic contrast Rotation: 0°, 90°, 180°, 270°, including Corridor Format Text and image overlay, Mirroring of images, Privacy mask
Network	
Security	Password protection, IP address filtering, HTTPS ^b encryption, IEEE 802.1X ^b network access control, Digest authentication, User access log
Supported protocols	IPv4/v6, HTTP, HTTPS ^b , SSL/TLS ^b , QoS Layer 3 DiffServ, FTP, CIFS/SMB, SMTP, Bonjour, UPnP, SNMPv1/v2c/v3 (MIB-II), DNS, DynDNS, NTP, RTSP, RTP, TCP, UDP, IGMP, RTCP, ICMP, DHCP, ARP, SOCKS
System integration	
Application Programming Interface	Open API for software integration, including VAPIX [®] and AXIS Camera Application Platform; specifications at www.axis.com AXIS Video Hosting System (AVHS) with One-Click Camera Connection ONVIF Profile S; specification at www.onvif.org
Intelligent video	Video motion detection, Active tampering alarm AXIS Camera Application Platform enabling installation of additional applications
Event triggers	Intelligent video, Edge storage events, External input
Event actions	File upload: FTP, HTTP, network share and email Notification: email, HTTP and TCP External output activation Video recording to edge storage Pre- and post-alarm video buffering
Data streaming	Event data
Built-in installation aids	Pixel counter
General	
Casing	IP66- and NEMA 4X-rated, IK10 impact-resistant aluminum casing with transparent, polycarbonate cover and dehumidifying membrane Encapsulated electronics Captive screws (resistorx 10) Color: White NCS S 1002-B
Memory	256 MB RAM, 128 MB Flash
Power	Power over Ethernet IEEE 802.3af/802.3at Type 1 AXIS M3024-LVE: Class 2, max. 3.4 W AXIS M3025-VE: Class 2, max. 3.2 W
IR illumination	AXIS M3024-LVE: High-efficiency, long-life 850 nm IR LEDs; range of reach up to 10 m (33 ft.) depending on scene
Connectors	Male RJ45 10BASE-T/100BASE-TX PoE on a 2 m (6.6 ft.) network cable; warranty can be maintained even when cable is cut—for more information, contact your Axis partner Terminal block for 1 alarm input and 1 output
Edge storage	MicroSD/microSDHC/microSDXC slot supporting memory card up to 64 GB (card not included) Support for recording to network share (network-attached storage or file server)
Operating conditions	-30 °C to 50 °C (-22 °F to 122 °F) Humidity 10–100% RH (non-condensing)
Approvals	EN 55022 Class B, EN 61000-6-1, EN 61000-6-2, EN 55024, FCC Part 15 Subpart B Class B, ICES-003 Class B, VCCI Class B, AS/NZS CISPR 22 Class B, KCC KN22 Class B, KN24, IEC/EN/UL 60950-22, EN 50581, IEC 60529 IP66, NEMA 250 Type 4X, IEC 62262 IK10 AXIS M3024-LVE: IEC 62471
Weight	AXIS M3024-LVE: 770 g (1.7 lb.) AXIS M3025-VE: 740 g (1.6 lb.)
Included accessories	Installation Guide, Installation and Management Software CD, Windows decoder 1-user license, Drill hole template, Resistorx L-key, Terminal block connector
Warranty	Axis 1-year warranty, www.axis.com/warranty

- a. Horizontal angle of view
b. This product includes software developed by the OpenSSL Project for use in the OpenSSL Toolkit (<http://www.openssl.org/>), and cryptographic software written by Eric Young (ey@cryptsoft.com).

More information is available at www.axis.com